

LEGEND

Tree Inventory

Refer to Table 1 of report dated 19 January, 2023 for tree inventory information. Trees greater than 15.24m DBH on and within six metres of the subject property were included in the inventory.

Tree Removals

The removal of 76 trees will be required to accommodate the proposed development, as indicated with a RED tree labels.

Tree Preservation

Preservation of the remaining 50 trees included in the individual tree inventory will be possible with appropriate tree protection measures. Trees identified for preservation are shown with a GREEN tree label. Removal of trees not to be implemented prior to construction. Removal of trees not to be implemented in MAGEENTA. Refer to Tree Protection Plan Notes for preservation details, and tree preservation fence detail.

- Tree Label (GREEN): preservation recommended
- Tree Label (RED): removal required
- Duplicate (GREEN circle)
- Surveyed Tree Location by KFCI
- Property Boundary (BLUE)
- Location of required Tree Preservation Fence (thick MAGEENTA)

TREE PROTECTION PLAN NOTES

Prior to site disturbance the owner must confirm that no migratory birds are making use of the site for nesting. The owner must ensure that the works are in compliance with the Migratory Bird Convention Act and that no migratory bird nests will be impacted by the proposed work. It is the applicants' responsibility to discuss potential tree injury of trees on shared property lines with their neighbours. Should such trees be injured to the point of instability or death the applicant may be held responsible for removal and such issues would be dealt with in civil court or through negotiation. The applicant would be required to replace any trees removed or damaged. The City of Owen Sound, including grade changes, surface treatments or excavations of any kind is permitted within the area identified on the Tree Protection Plan or Site Plan as a Tree Protection Zone (TPZ). No root cutting is permitted. No storage of materials or fill is permitted within the TPZ. No movement or storage of vehicles or equipment is permitted within the TPZ. Grade changes are not permitted with established TPZ. The area(s) identified as a TPZ must remain undisturbed at all times.

TREE PROTECTION BARRIERS:

For City-owned Trees:
Tree protection barriers for trees situated on the City road allowance where visibility must be maintained, can be 1.2m (4ft.) high and consist of chain link, or orange plastic web snow storage outside the TPZ. All supports and bracing should minimize damage to roots outside the TPZ. Where some fill or excavate has to be temporarily located near a tree protection barrier, plywood must be used to ensure no material enters the TPZ. If the TPZ needs to be reduced to facilitate construction access, the tree protection barrier must be maintained at a lesser distance and the exposed TPZ protected with plywood and wood chips. This must first be approved by the City of Owen Sound.

For trees on private property situated on or adjacent to construction sites:
Tree protection barriers must be installed around trees to be protected using plywood clad hoarding or an equivalent approved by the City of Owen Sound. All supports and bracing to satisfy the barrier should be outside the TPZ. All steel supports and bracing should be painted a dark grey to roots outside the TPZ.

General Note:

Prior to the commencement of any site activity the tree protection barriers specified on this plan must be installed and written notice provided to the City of Owen Sound. Established tree protection zones must not be used as construction access, storage or staging areas. The tree protection barriers must remain in effective condition until all site activities including landscaping are complete. Written notice must be provided to the City of Owen Sound prior to the removal of the tree protection barriers.

ANBROCK CULTURAL WORK:
Any roots or branches which extend beyond the TPZ indicated on this plan which require any form of protection shall be protected by approved methods. All supports and bracing to satisfy the barrier should be outside the TPZ. All steel supports and bracing should be painted a dark grey to roots outside the TPZ.

No.	Issue/Revisions	Date	By
1	Report Submission	19 Jan. 2023	KH

Base Data: Archibald, Gray & Mudgey Ltd. (topo); Chantrelle Architects Services Ltd. (site plan)

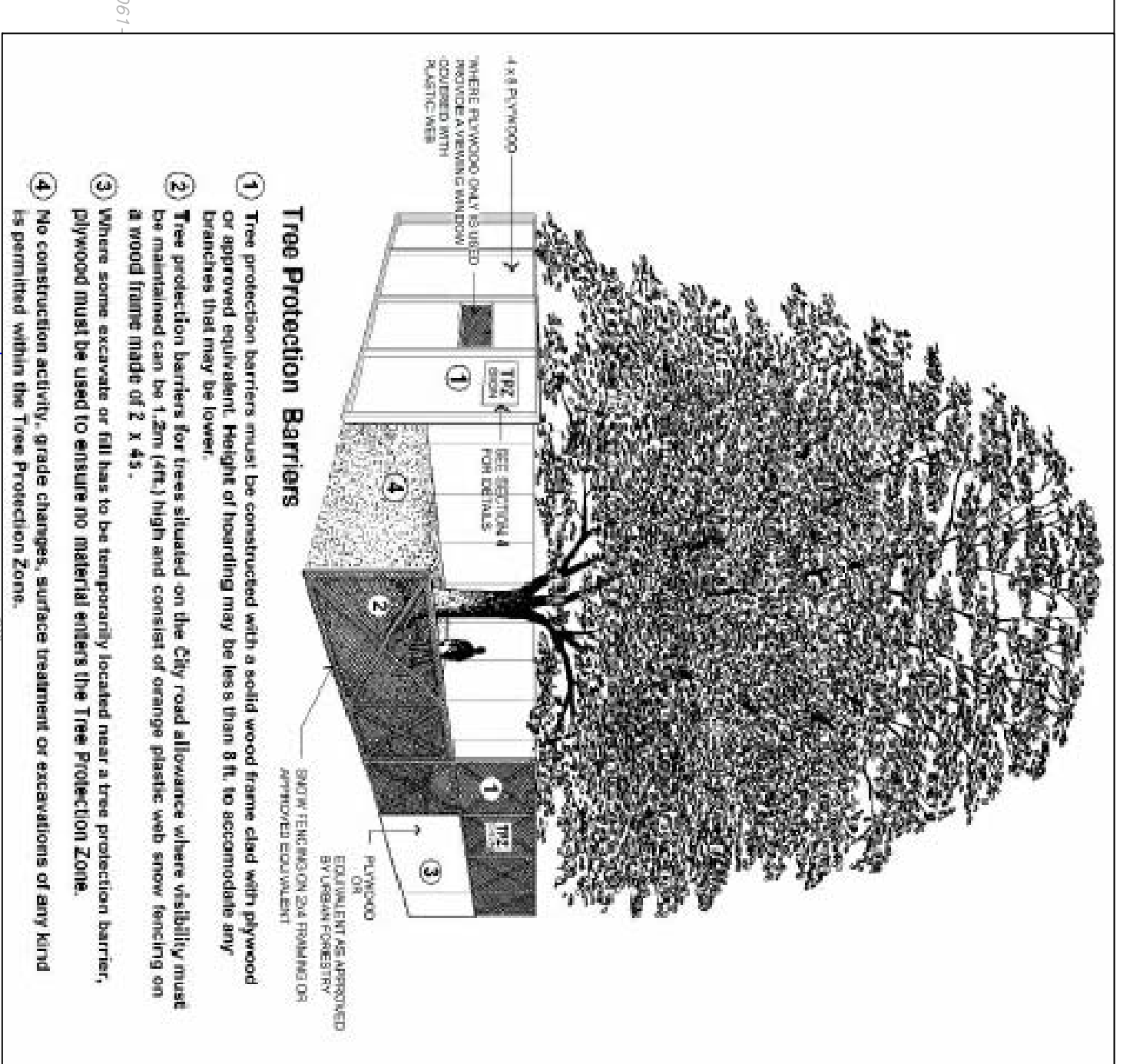
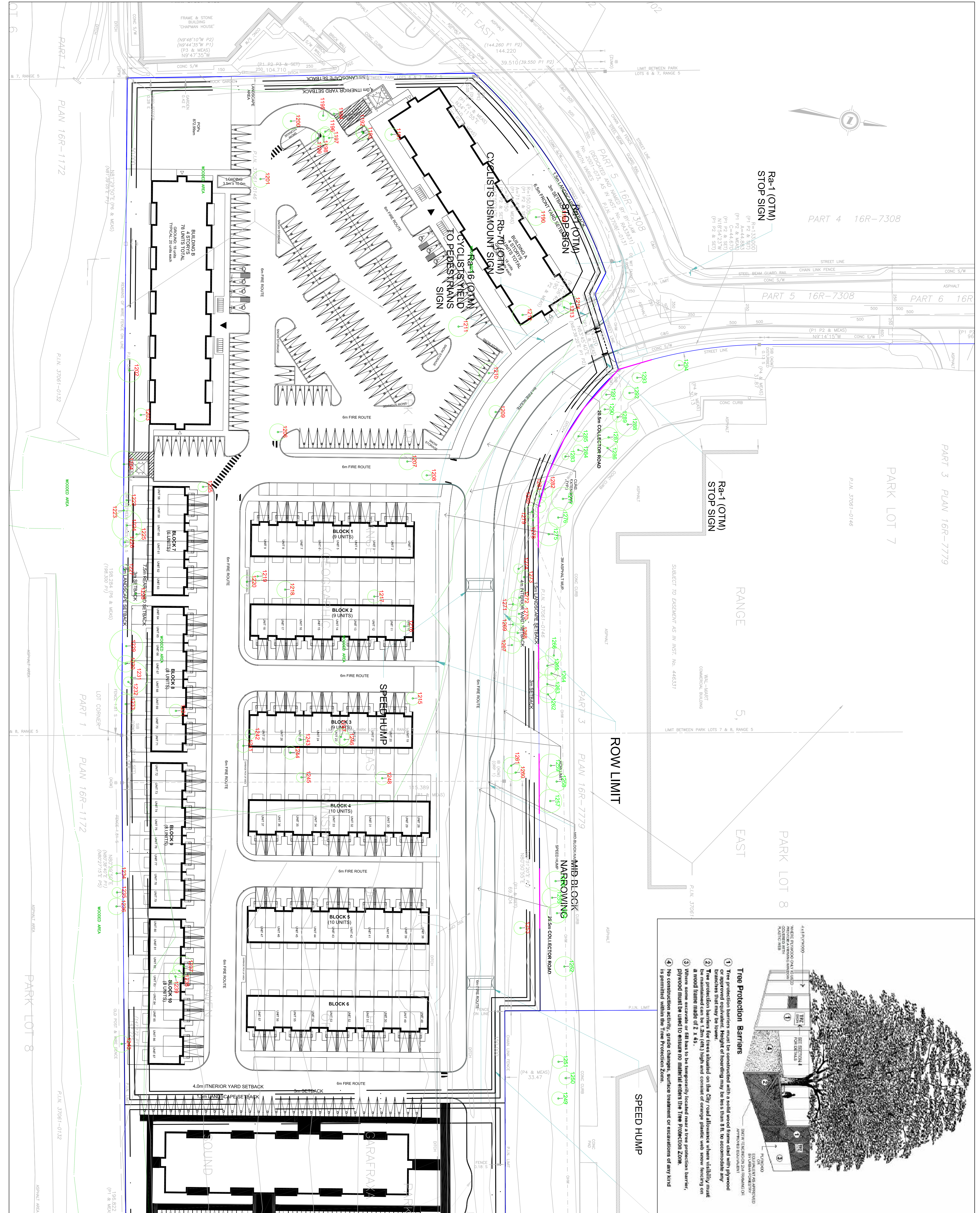
KUNTZ FORESTRY CONSULTING INC.
 PO Box 1287 Lakeshore W PO
 146 Lakeshore Road West
 Oakville ON L6K 0B3
 (905) 883-8371
 www.kuntzforestry.ca
 cons@kuntzforestry.ca

Client
 SmartCentres
 Real Estate Investment Trust
 3200 Highway 7
 Vaughan, Ontario L4K 5Z5

Property
 1555 18th Street East
 Owen Sound, Ontario

Tree Inventory and Preservation Plan
 Project P3296
 Date 19 January 2023
 Scale 1:500

Figure 1



- ### Tree Protection Barriers
- 1 Tree protection barriers must be constructed with a solid wood frame clad with plywood or approved equivalent. Height of hoarding may be less than 8 ft. to accommodate any overhead utilities or other trees situated on the City road allowance when visibility must be maintained can be 1.2m (4ft.) high and consist of orange plastic web snow hoarding on a wood frame made of 2 x 4s.
 - 2 Where some excavate or fill has to be temporarily located near a tree protection barrier, plywood must be used to ensure no material enters the Tree Protection Zone.
 - 3 No construction activity, grade changes, surface treatment or excavations of any kind is permitted within the Tree Protection Zone.